



4 Bed  
House - Detached  
located in Low  
Pittington

Guide Price £850,000



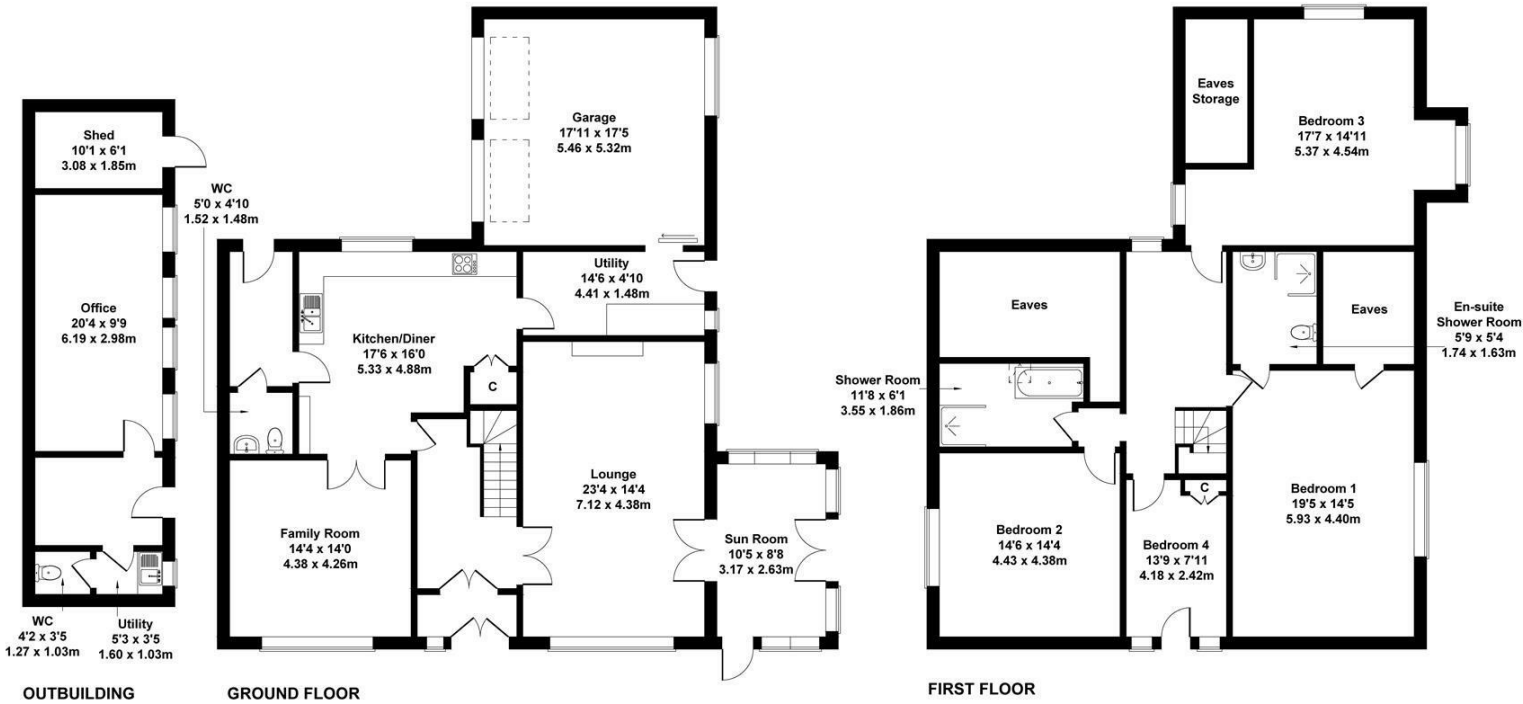
Vickers  
& Barrass

Est. 1973

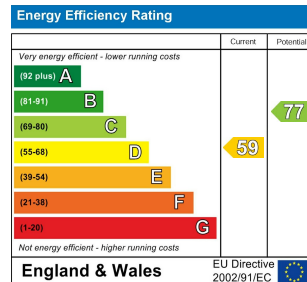
Land and Estate Agents

# Beacon Hill, High Street, Low Pittington, Durham, DH6 1BE

Approximate Gross Internal Area  
3283 sq ft - 305 sq m



SKETCH PLAN FOR ILLUSTRATIVE PURPOSES ONLY  
All measurements walls, doors, windows, fittings and appliances, their sizes and locations, are approximate only. They cannot be regarded as being a representation by the seller, nor their agent.  
Produced by Potterplans Ltd. 2024



## DIRECTIONS

## CONTACT

Humbleton Park  
West Auckland Road  
Darlington  
County Durham  
DA1 2JH

E: [darlington@vickersandbarrass.co.uk](mailto:darlington@vickersandbarrass.co.uk)  
T: 01325 728084  
[www.vickersandbarrass.co.uk](http://www.vickersandbarrass.co.uk)

# Vickers & Barrass

Est. 1973

Land and Estate Agents